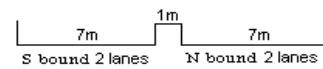
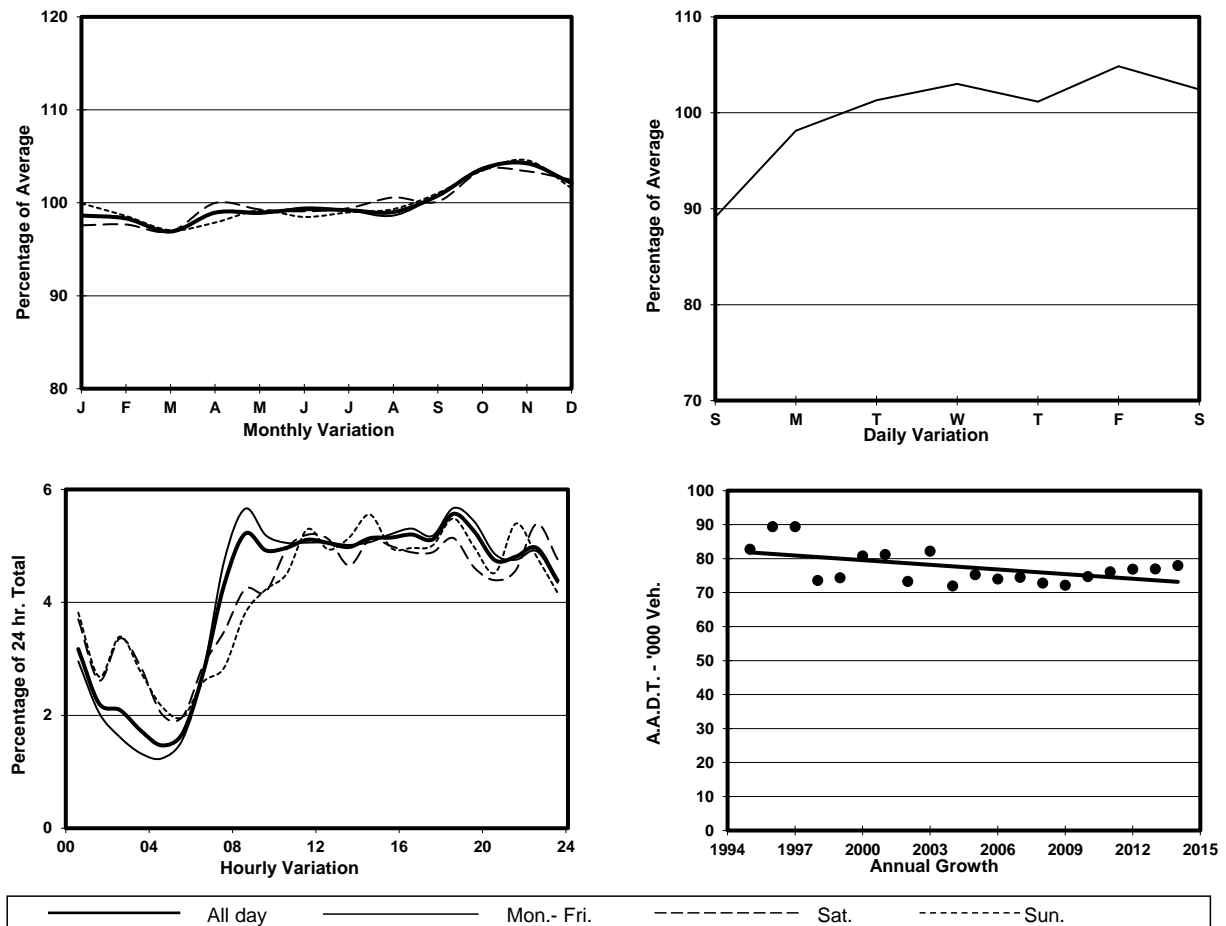


YEAR 2014
 COVERAGE (B) STATION 4213
 ROAD NETWORK MAJOR
 ROAD TYPE URBAN TRUNK ROAD

LINK EAST KOWLOON CORRIDOR <FO> (from MA TAU
 KOK RD to CHATHAM RD N)



1. TRAFFIC FLOW VARIATION AND GROWTH



2. TRAFFIC CHARACTERISTICS (BY DIRECTION)

Parameter	All - Day	Mon. - Fri.	Sat.	Sun.
SOUTH BOUND				
A.A.D.T.	29040	29330	30260	27590
R 12 / 24 - %	59.5	60.8	54.8	58
R 16 / 24 - %	78.6	80.1	73.3	76
AM Peak Hour	0800-0900	0700-0800	0800-0900	0900-1000
One-way flow at AM peak hour	1650	1800	1540	1360
T - % (AM)	-	14.9	-	-
PM Peak Hour	1800-1900	1800-1900	1800-1900	1800-1900
One-way flow at PM peak hour	1520	1560	1390	1520
T - % (PM)	-	7.5	-	-
Prop.of commercial vehicles - 16 hr.	-	12.1	-	-
NORTH BOUND				
A.A.D.T.	48870	50370	50040	42200
R 12 / 24 - %	61.4	63	58.1	55.9
R 16 / 24 - %	81.7	83.3	77.4	76.7
AM Peak Hour	0800-0900	0800-0900	0900-1000	0900-1000
One-way flow at AM peak hour	2410	2740	1990	1590
T - % (AM)	-	14.9	-	-
PM Peak Hour	1600-1700	1600-1700	1600-1700	1800-1900
One-way flow at PM peak hour	2880	3000	2960	2310
T - % (PM)	-	10	-	-
Prop.of commercial vehicles - 16 hr.	-	10.4	-	-

3. OTHER INFORMATION AND COMMENT

Coverage (B) Station 4213
Year 2014

4. Vehicle classification and occupancy - Monday to Friday

Time		Class of vehicle									
		Motor	Private	Taxi	Private	PLB	Goods veh.		Non	Fr. Bus	
		Cycle	Car		LB		Light	M & H	Fr. Bus	SD	DD
0700-0800	Pro	8.0	25.0	31.2	3.0	0.0	15.5	6.9	7.4	0.1	3.0
	Ocp	1.0	1.4	2.2	5.7	0.0	1.5	1.1	10.3	1.0	28.0
0800-0900	Pro	6.0	43.7	21.7	0.5	0.0	13.5	7.5	3.9	0.0	3.0
	Ocp	1.1	1.3	2.1	1.2	0.0	1.5	1.5	14.2	0.0	37.1
0900-1000	Pro	4.0	33.0	27.4	0.7	0.0	20.6	8.2	2.8	0.0	3.3
	Ocp	1.0	1.3	2.1	1.6	0.0	1.6	1.2	13.0	0.0	21.9
1000-1100	Pro	3.5	31.3	24.8	2.0	0.0	26.8	6.6	2.3	0.0	2.6
	Ocp	1.1	1.4	2.2	2.4	0.0	1.4	1.3	7.2	0.0	16.5
1100-1200	Pro	2.8	30.1	28.6	1.8	0.0	25.0	7.0	2.3	0.0	2.4
	Ocp	1.0	1.3	2.2	1.6	0.0	1.4	1.2	11.7	0.0	20.7
1200-1300	Pro	3.2	37.1	24.5	1.3	0.0	22.8	6.3	3.0	0.0	1.9
	Ocp	1.1	1.3	2.1	2.2	0.0	1.5	1.3	16.8	0.0	23.3
1300-1400	Pro	3.6	30.8	27.0	1.4	0.0	24.9	7.0	3.6	0.0	1.7
	Ocp	1.1	1.2	2.1	3.4	0.0	1.6	1.2	16.6	0.0	25.1
1400-1500	Pro	3.7	34.6	20.6	1.9	0.0	27.1	7.8	2.4	0.0	1.8
	Ocp	1.0	1.5	2.3	2.3	0.0	1.6	1.2	8.6	0.0	28.0
1500-1600	Pro	3.9	33.0	24.1	0.8	0.0	26.3	7.1	2.7	0.0	2.0
	Ocp	1.0	1.4	2.3	7.0	0.0	1.4	1.2	12.7	0.0	22.1
1600-1700	Pro	3.3	33.8	26.0	1.1	0.0	24.9	5.4	3.3	0.0	2.2
	Ocp	1.0	1.3	2.2	1.8	0.0	1.3	1.1	3.8	0.0	26.5
1700-1800	Pro	7.5	40.0	22.4	0.9	0.0	18.2	4.2	3.9	0.0	2.9
	Ocp	1.0	1.3	2.3	1.3	0.0	1.4	1.2	11.3	0.0	29.8
1800-1900 Peak hour	Pro	7.4	48.2	24.7	0.3	0.0	12.4	1.6	3.4	0.0	2.1
	Ocp	1.1	1.3	2.3	1.3	0.0	1.4	1.2	14.6	0.0	48.7
1900-2000	Pro	6.2	45.7	30.3	0.3	0.0	9.9	1.0	4.3	0.0	2.3
	Ocp	1.1	1.4	2.3	1.7	0.0	1.3	1.2	21.6	0.0	42.6
2000-2100	Pro	4.1	44.8	33.2	0.2	0.0	7.9	1.8	5.3	0.0	2.6
	Ocp	1.1	1.5	2.0	1.5	0.0	1.3	1.2	17.6	0.0	23.2
2100-2200	Pro	3.6	40.2	41.0	0.9	0.0	7.1	2.0	3.2	0.0	2.1
	Ocp	1.3	1.4	2.2	1.9	0.0	1.5	1.2	3.9	0.0	28.2
2200-2300	Pro	5.9	41.0	41.2	0.2	0.0	4.9	2.0	2.1	0.0	2.5
	Ocp	1.2	1.4	2.0	2.0	0.0	1.3	1.2	7.5	0.0	28.3
16 hours	Pro	4.8	37.3	27.9	1.0	0.0	18.0	5.1	3.4	0.1	2.4
	Ocp	1.1	1.3	2.2	2.8	0.0	1.5	1.2	12.7	1.0	28.2

Legend

Pro. Proportion of vehicles in % (Sum may not add up to 100% due to figure rounding)
Ocp. Average occupancy of vehicles
M&H Medium and Heavy